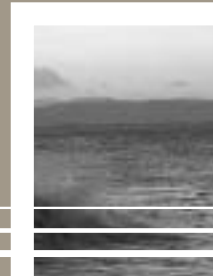
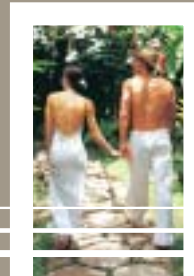
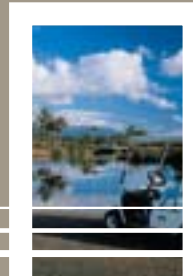
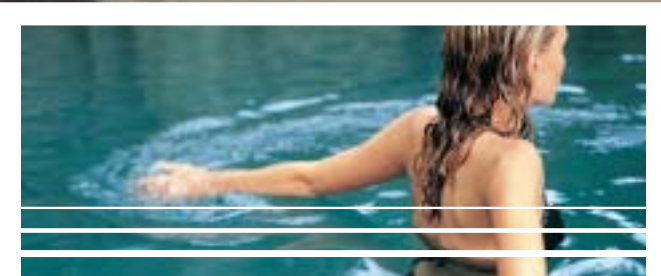
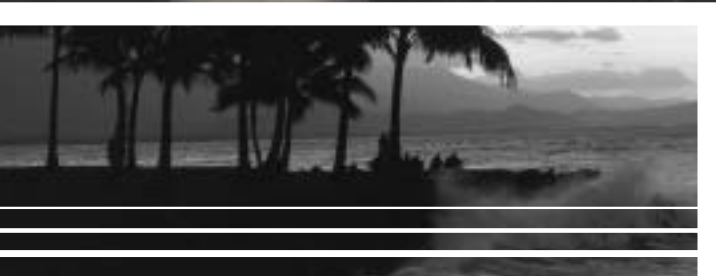




OASIS

PORT DOUGLAS



A L L U R E O F T H E D E S T I N A T I O N



OASIS
PORT DOUGLAS



Let your mind drift with the gentle lapping of the crystal clear waters upon the furrows of sand, as if on the creases on your forehead. Drift away, immerse yourself in the delicate warmth of the sun and sea mist.



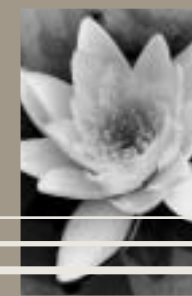
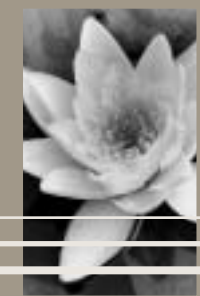
OASIS
PORT DOUGLAS

DRIFT
AWAY



Let your body and mind give in to the sensuality which is Port Douglas. Nestled within a tropical enclave is the oasis you have been dreaming of. Juxtaposed between 4 mile beach and one of the world's most beautiful golf courses, lies "Oasis", a boutique residential pocket, hidden by lush tropical vegetation, and designed to afford you the little luxuries in life that make it special.





Drift Away
DRIFT
AWAY



Oasis offers 21 three bedroom villas, each on their own community title.

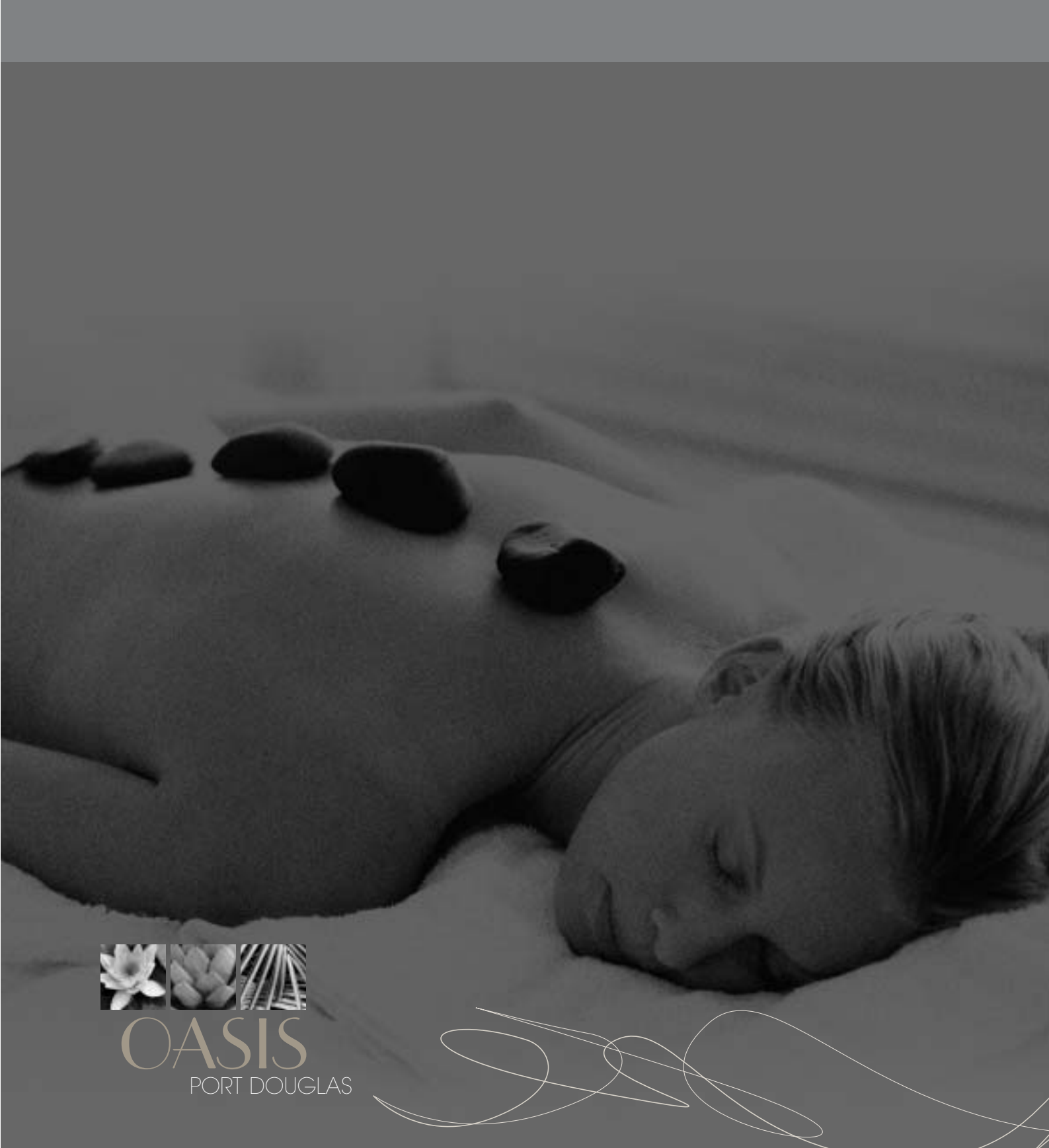
Designed by leading Melbourne architect Chris Connell, the creation of Oasis can be said to be designed as a contemporary take on the classic Queenslander. Featuring wide eaves and protected outdoor living areas, all of which integrate seamlessly with the internal living spaces.

Highlighted by louvre screens which allow varying degrees of breeze and light to enter your home, Oasis has been designed to maximize your living pleasure.

Major focus has been placed upon the architecture. Design elements have been combined to emphasise the lush tropical landscaping by creating private outdoor cooking and living areas, as well as featuring a landscaped courtyard and private pool for each home.

Cool porcelain tiles and stone benchtops have been adopted internally and externally, whilst stone and render have been applied to the exterior to create an earthy facade which blends into the lush tropical gardens.



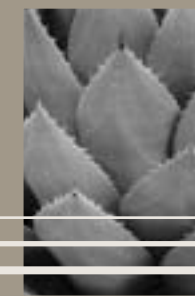
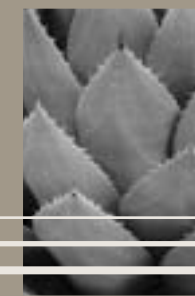


OASIS
PORT DOUGLAS

Close your eyes, release
your mind, embrace the chance
to allow your senses to relax and
indulge in the sensuality that is
Port Douglas.

SENSES
RELAX





Port Douglas promises a lifestyle unsurpassed in Australia, the wild beauty of the rainforests and the Great Barrier Reef or the luxury of the finest dining and shopping you can experience.

Simply... Enjoy the warm sand as it envelopes your feet, as you take a sunset stroll along the beach, lay beneath the slow breezes of a palm tree and contemplate this haven on earth. Your own little Oasis in the sun.

SENSES
RELAX



OASIS



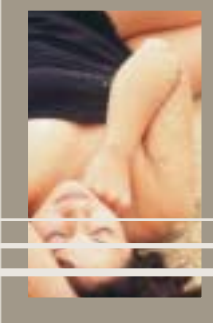
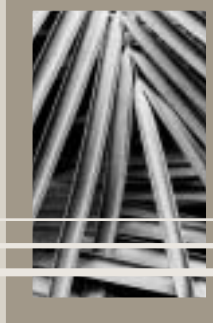
P O R T

D O U

G L A S



The mood is set, discard your armour, let your body enjoy the sensations of warm sand, crisp clear waters and an enveloping wave of warmth, as you smile into the candescent blue sky.



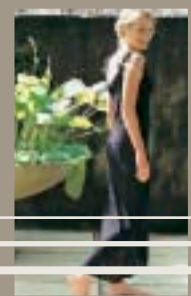
OVERALL SITE PLAN



OASIS
PORT DUMAS

YOUR
MOOD

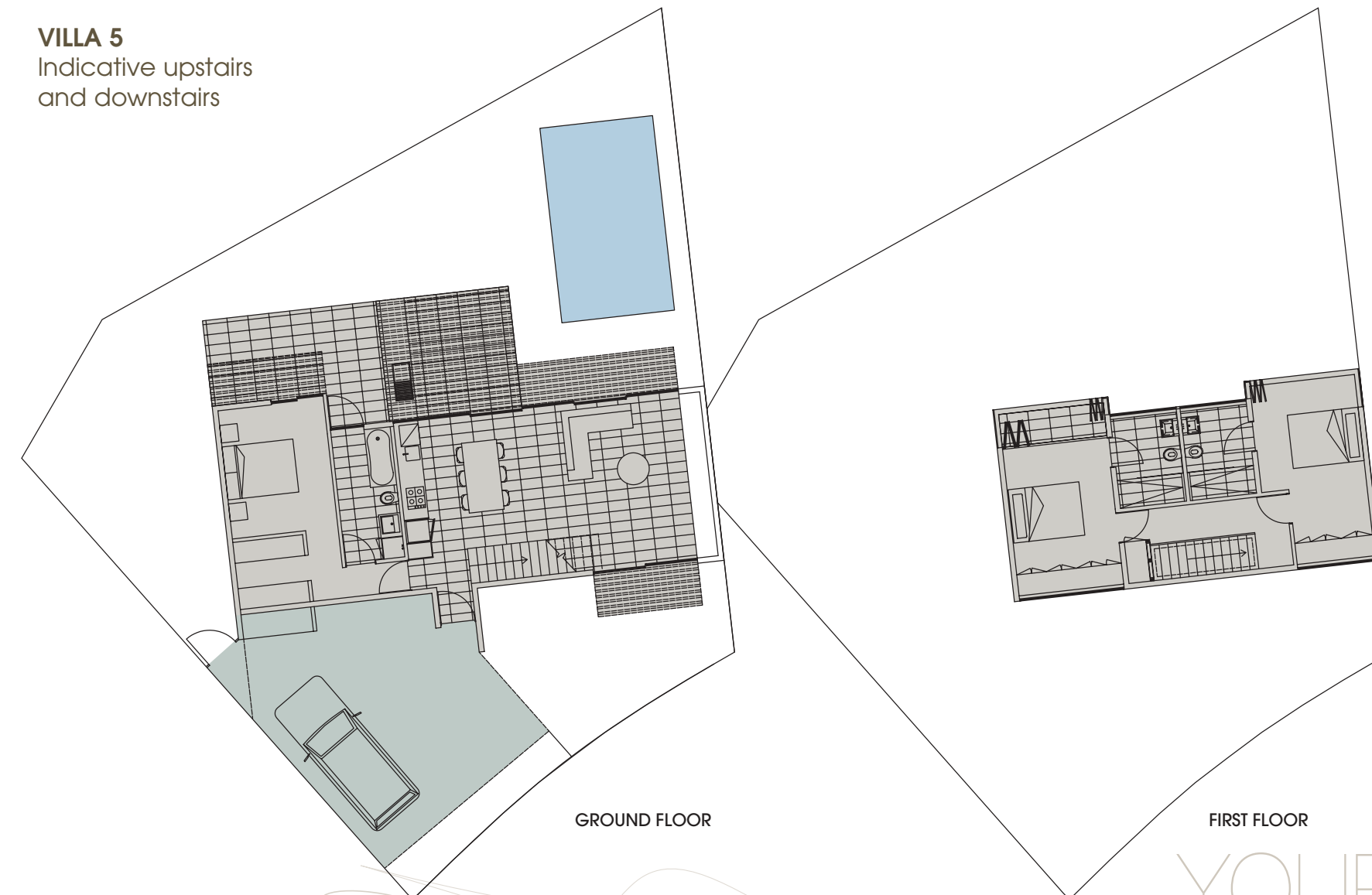
YOUR
MOOD



Port Douglas now features as a world class destination for locals as well as the international jetset. A pristine seaside town that offers a relaxing lifestyle with a close community atmosphere. Sharing the same tropical latitude as Tahiti, Port Douglas attracts visitors for its old fashioned charm, wide streets shaded by trees and superb holiday attractions.

Oasis Port Douglas is perfectly located to enjoy the many assets Port Douglas has to offer, in particular a paradise of Golf at the Mirage Country Club, rated as one the world's best golf resort courses in the world. This 18 hole international standard championship course was designed by renowned golf architect Peter Thompson, and is only surpassed by the bordering Coral Sea and the majestic mountain backdrop.

VILLA 5
Indicative upstairs
and downstairs



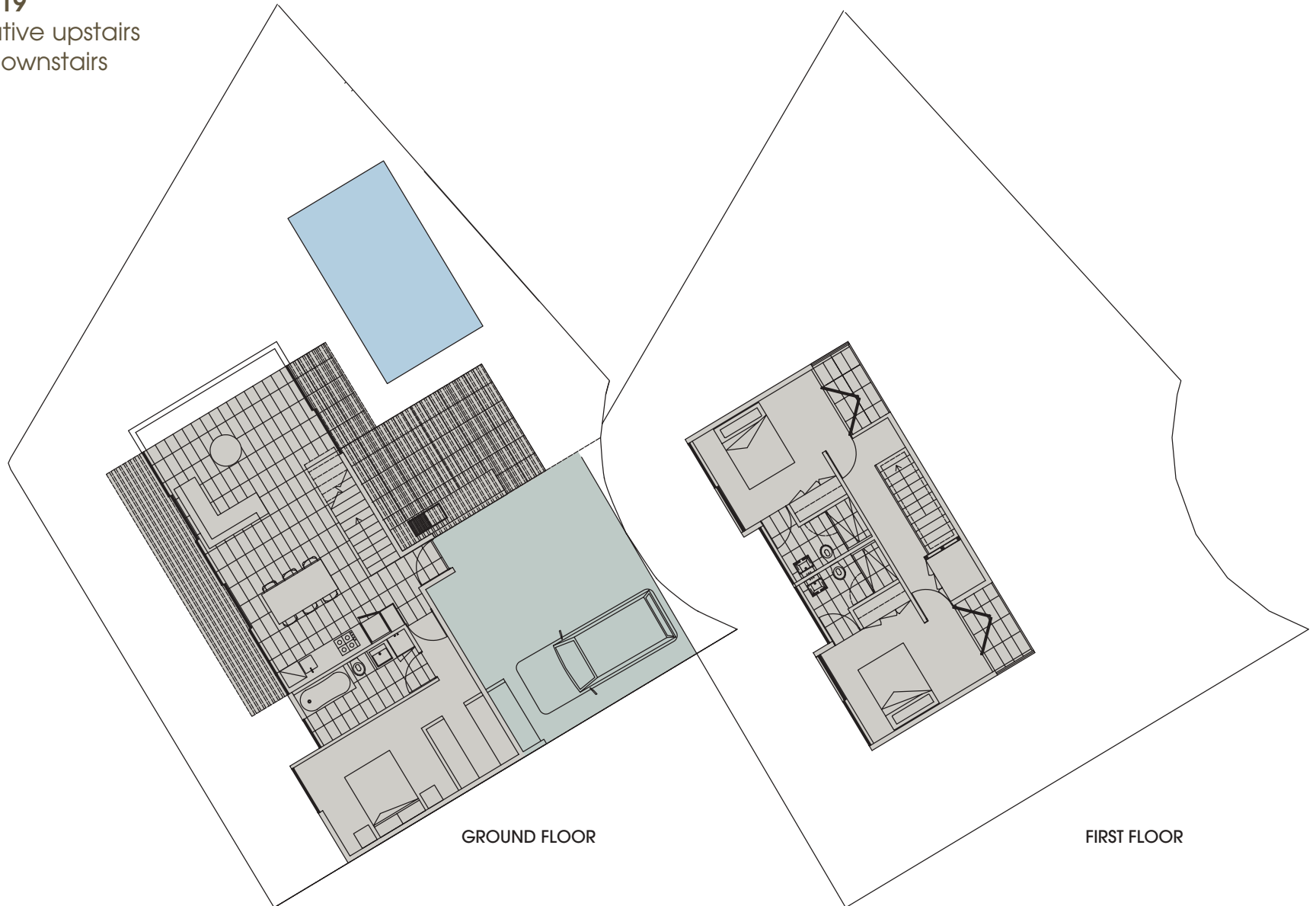
GROUND FLOOR

FIRST FLOOR

YOUR
MOOD



VILLA 19
Indicative upstairs
and downstairs



Perfect moments, quiet subtleties,
a haven, a luxury, your own Oasis
in the sun.

FINISHES AND FITTINGS - ALL VILLAS EXTERNAL FINISHES

WALLS	External rendered block work walls painted with selected colour
UPPER CLADDING	"Shadowclad" or similar
ENTRY FEATURE WALL CLADDING	Feature stone cladding, to be selected by designer
WALKWAY TO ENTRANCE	Paving as selected by designer
TILLING	600 x 300mm non-slip selected tiling as per living
GLAZING	Powder coated aluminium frames with clear glass
SCREENS	Powder coated fixed louvered sunscreens
ROOF	Colorbond roofing

INTERIOR FINISHES AND FEATURES

LIVING/DINING AREA
Floor – selected 600x 300mm porcelain tiles
Walls – painted plasterboard
Ceiling – square set plasterboard painted white

KITCHEN
Floor – selected 300 x 600mm porcelain tiles
Cabinets – stone bench tops or similar with laminate finish to doors and Drawers

Appliance and Fittings

Electric Oven – Bosch (or similar)

Cooktop – Bosch (or similar)

Rangehood – Bosch (or similar)

Dishwasher – Bosch (or similar)

Stainless steel sink with Dorf (or similar) mixer

Splashback – white glazed rectified tiles

LAUNDRY
Clothes dryer – Bosch (or similar)

BEDROOMS
Floor – Wool loop pile carper as selected by Designer
Walls – painted plasterboard
Ceiling – painted plasterboard
Robe Units – Louvre doors – top shelf with hanging
One bank of shelves

QUIETLY
PERFECT



OASIS
PORT DOUGLAS

QUIETLY
PERFECT



OASIS
PORT DOUGLAS



WALK IN ROBE	Laminated shelves with hanging rails and storage over
UPSTAIRS ENSUITES	Floor – selected tiles as per living Wall – 600 x 300 white glazed rectified tiles Tapware – Dorf (or similar as selected by Designer) Toilet – Fowler (or similar as selected by Designer) Basin – Caroma Wall Basin (or similar as selected by Designer) Fixed Panel glass shower screen Towel rails – toilet roll holder, shower shelf as selected by Designer Mirror – as selected by Designer
MAIN BATHROOM	Floor – Selected tiles as per living Wall – 600 c 300mm White rectified tiles Tapware – Dorf (or similar as selected by Designer) Toilet – Fowler (or similar as selected by Designer) Basin – Caroma Vitreous China Basin (or similar as selected by Designer) Bath – Raymour aquaria bath (or similar as selected by Designer) Fixed Panel Glass shower screen Towel rails – toilet roll holder, shower shelf as selected by Designer Mirror – as selected by Designer
INTERNAL STAIRWELL FINISHES	Timber treads, powder coated hand rails
EXTERNAL LANDSCAPING FEATURES	Preformed pool, random pavers Tropical landscaping – where possible Barbeque – Drop in stainless steel barbeque, set in stone bench top or similar
CARPARK	Exposed aggregate or coloured concrete
ELECTRICAL INSTALLATIONS	Ceiling mounted fans Electric hot water system Individual split Air-conditioning system Television aerial installation to living area and main bedroom Provision for future connection to cable television network Telephone cabling to living/dining area and main bedroom General purpose power outlets located in all rooms Low voltage light fittings as selected by Designer



Port Douglas is the closest gateway to the Great Barrier Reef. A natural wonder with incredible biodiversity. Colorful coral gardens of every shape and form, home to an abundant array of tropical marine life. There's a reef tour to suit every style, making it so easily accessible that everyone can experience this extraordinary underwater world.

The World Heritage rainforests are also within easy reach of Port Douglas. The lush green coastal strip of the Daintree, Cape Tribulation region to the north of Port Douglas is home to some of the oldest forests in the world and is a treasure trove of rare plant and animal species.

Oasis Port Douglas,
you wouldn't be anywhere else.



OASIS
PORT DOUGLAS





OASIS

PORT DOUGLAS



(07) 4099 5414
David Cotton 0417 709 667

***Note to Foreign Investors:** An application has been lodged with the Foreign Investment Review Board for approval to sell up to 50% of the villas to foreign investors.